

# INNOVATE

NEWS FROM LATTIMER

'THE WORLD LEADER IN IS VARIABLE EQUIPMENT'

IN THIS ISSUE

RECARDO BACK IN AFRICA P2

NEW SKILLS FOR JAMES P3

NEW PRODUCT P3

THE ITALIAN JOB P4

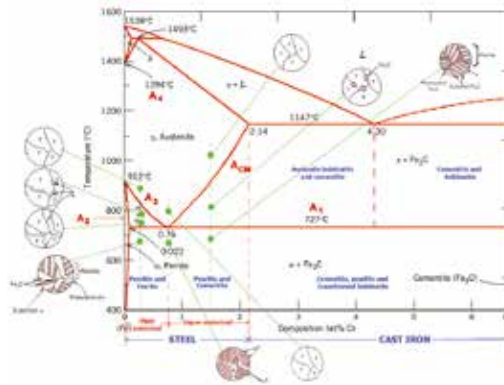
## Heat Treatment

### Correct treatments make the difference

Correctly selected and applied Material Treatments can make the difference between a product's success or its failure. It is essential that Lattimer parts can be relied upon to operate without issue when installed on the IS machine.

Lattimer's experience in the correct pairing of Material and Heat Treatment can be the difference between the success and failure.

Over 50 years experience of making the right choices continues today with more parts receiving a treatment to improve their performance and longevity.



### Understanding Product Requirements

**Our customers understand how important it is to keep their IS machines running smoothly, maintaining container quality and avoiding unnecessary downtime. It is essential that these parts can be relied upon to operate without issue when installed on the machine.**

All Lattimer products benefit from decades of experience in material selection and from the treatments applied, ensuring they consistently perform as required and expected.

In partnership with our raw material and heat treatment suppliers, and together with their technical departments, materials, manufacturing processes and heat treatment regimes are carefully matched to deliver a quality finished product.

Selecting the correct material-treatment combination can deliver increases in hardness, hardness depth, strength, wear

resistance and stability at elevated temperatures. An ill chosen combination can have disastrous results, with parts deforming in the furnace, changing shape over time, having too thin a hard surface layer or too soft a core, making the difference between excellence and disaster. Anyone can make a new part look bright and shiny, however it is the attention to detail, the precision and how the part performs over time that differentiates a Lattimer product from that of the competition.

Lattimer have been selecting materials and accompanying treatments for over 50 years so you can always be sure of a perfect match. Lattimer parts are meant to stand the test of time with everything the IS machine can throw at it, parts you can trust.

**Contact your Lattimer Account manager for more information.**



## 2020: Annus Horribilis

Here we are at the end of yet another year, a year significantly different than any other. COVID 19 has swept across the globe however Lattimer in the UK has remained open throughout.

Travel to customers this year has been almost zero. Relying on Zoom to hold face to face meetings, a computer program most of us had never heard of this time last year.

News in recent days has led us to believe that a vaccine for the virus will be available in the next few months and so we hope that by the second quarter of 2021 things will be returning to normal and we can start to travel once again.

I would like to take this opportunity of thanking all Lattimer employees for their hard work, support and dedication during this difficult year, particularly those in Manufacturing Operations who have maintained production without a break, keeping our customers supplied with product as if everything were normal, thank you very much.

**Here's hoping for a much better 2021.**

# EXCEPTIONAL GLASS ENGINEERING

## DESIGN REVIEW SUCCESS 960 HOLDERS

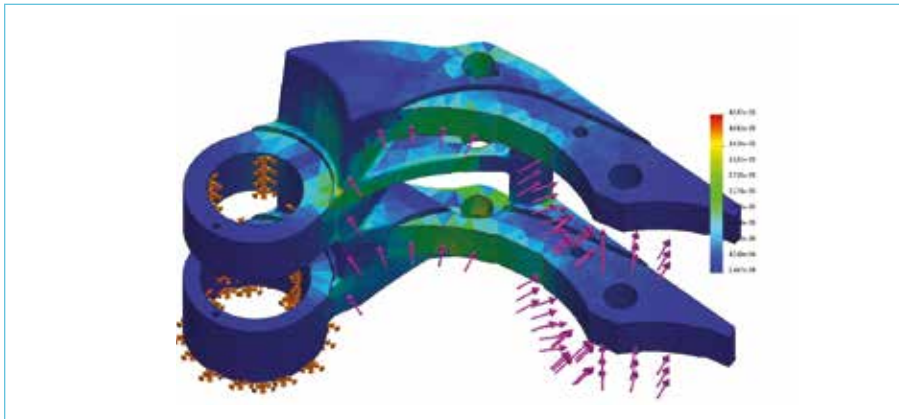
A design review has identified several areas where, without significantly increasing cost, the 960 standard DG mould holder can be improved to avoid breakage.

The size of the cast radii in several parts of the mould holder arm have been enlarged to distribute stress which concentrates in these areas during operation.

A structural web has been increased in thickness and the shape modified to improve its effectiveness.

Resulting stress simulations using Solidworks design software has shown that the strength of the arm has been more than doubled by the modifications, demonstrating once again that there are always opportunities to improve products that have been in use for many years.

**Contact your Account Manager if you have a product that is letting you down, we would be delighted to assist.**



## EXITO DE REVISIÓN DE DISEÑO DE LAS CHARNELAS 960

Una revisión de diseño ha identificado varias áreas donde sin incrementar el coste de estas piezas, las charnelas en DG 960 pueden ser mejoradas para reducir la posibilidad de rotura cuando están sujetas a impactos.

El tamaño del radio en varias partes de la charnela ha sido aumentado para distribuir mejor el estrés que se concentra en esas áreas cuando las charnelas están en funcionamiento.

El grosor en el soporte central de la charnela ha sido también incrementado y su forma modificada para mejorar su efectividad.

Las simulaciones de tensión resultantes, utilizando el software de diseño Solidworks han demostrado que la fuerza del brazo se ha más que duplicado debido a estas modificaciones, demostrando una vez más que siempre hay oportunidades para mejorar productos que se han utilizado durante muchos años.

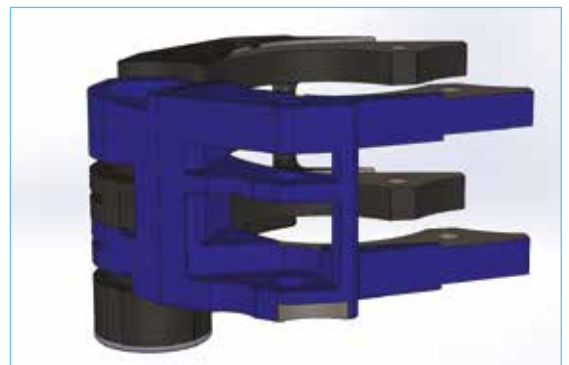
**No dudéis en contactar con vuestro responsable comercial si tenéis un producto el cual os está generando problemas, estaremos encantados de ayudaros.**



## RECARDO AT HOME BACK IN AFRICA

Recardo Jacobs has returned to South Africa for the Christmas break and due to the recent Covid restrictions made the trip earlier than planned.

Not being one to waste an opportunity Recardo has been visiting all the Consol plants in the country with our agent Carel Ewald. He has been working with the team in Cape Town identifying new product opportunities, helped by our good friend Phillip du Toit, the IS Manager at the plant.



## NEW SKILLS FOR JAMES

James Davidson a former Lattimer Apprentice returned to the business over a year ago after a spell travelling the world. James has played a major role in the successful transfer of product to our new Mazak vertical milling machine, saving time and improving product quality and consistency.

James is now being trained for a role in Manufacturing Engineering and spends one day each week in the department, honing his planning and programming skills. Steve Robinson, Manufacturing Engineering Manager commented "The continued development of our young talent is essential if we want to deliver the improvements required to stay ahead of the competition. We are confident that James will help us achieve this".



## INDIVIDUALLY SPRUNG BAFFLE ARM

To address container quality issues, principally that of 'unfilled finish' Lattimer have been working with a customer to develop an improved individually sprung Baffle Arm for their 4 ¼" TG set up.

Replacing Cast Iron with a lightweight aerospace aluminium alloy has significantly reduced weight, the material change coupled with a redesign of the arm to incorporate the I beam design has ensured the arm delivers consistency, increased strength and stability. Manufacturing the arm from Aluminium also reduces the product manufacturing lead time.

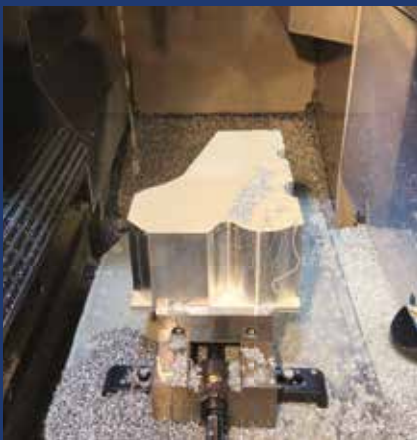


### Individual Springs

Removing the equalising bar and replacing it with springs applying a consistent level of force on each lock ring reduces variation, delivering consistency to the operation.

A reduction of around 50% in the number of components in the assembly also simplifies maintenance and reduces spare part stock holding.

A sample part manufactured in our low volume prototype manufacturing area has been trialled for 12 months and is now approved for use on a full machine so an increased quantity is presently being manufactured for delivery early 2021.



## NIS MACHINES – LATTIMER IS INCREASING ITS PORTFOLIO OF PRODUCTS

Lattimer now has a range of variables to suit the increasingly popular NIS machine.

The Lattimer **NIS Take Out Arm** is a proven product designed for the most challenging operating conditions, simple and easy to maintain with opposing taper roller bearings that comfortably handle the axial loads during operation, available in belt or chain drive.

The **NIS TG and QG Tong-heads** manufactured from lightweight aerospace grade aluminium billet, and supplied with precision Lattimer anti wink tong holders as standard.

A **Lattimer Neck Ring Mechanism** will soon be available for the NIS machine having first received the Lattimer treatment to address the backlash, air leakage and longevity issues, using Lattimer's expertise on this product.

**Contact your Lattimer Account manager for further information.**



# THE ITALIAN JOB

Mr Alessandro Morata and his team at Glamoro, Genoa, Italy have been Lattimer's partner in Italy for over a decade.



Mario Chesi

Alessandro Morata

With over 15 years experience serving the Italian Glass Container manufacturing industry, Glamoro's six employees, including two individuals dedicated solely to technical sales, are able to provide the high level of Lattimer service that customers have come to expect, and in their own language.

Glamoro's long standing relationship with Lattimer together with their extensive knowledge and experience in the Italian container glass industry continues to deliver seamless expertise, knowledge and service to our important Italian customers.

**Contact Alessandro at Glamoro:**  
[alessandro.morata@glamoro.it](mailto:alessandro.morata@glamoro.it)  
**+39 010 37 42 161**

## NEW SIGNINGS CONTINUE

Despite the ongoing issue of COVID19, Lattimer UK continue to recruit key personnel.

**MARK VALENTINE** has joined the design department, having many years experience Mark hit the ground running, his expertise in design has meant he has slotted seamlessly into the department, quickly becoming familiar with the Lattimer product range.

**CHRIS NUTTER** has joined as Milling Team leader. Chris has extensive experience as a Manufacturing Team leader and Production Engineer in the Aerospace industry as well as spending some time in cutting tool sales. He is keen to introduce improved systems and procedures into the department driving the delivery of the efficiency improvements started by Dave Poole.



Mark Valentine



Chris Nutter



[www.lattimer.com](http://www.lattimer.com)

 **Lattimer**  
79-83 Shakespeare Street  
Southport, Merseyside  
England PR8 5AP

Tel: +44 (0) 1704 535040  
Fax: +44 (0) 1704 541046  
Email: [sales@lattimer.com](mailto:sales@lattimer.com)

 **Lattimer**  
3603 North Mill Road  
Vineland  
New Jersey 08360, USA

Tel: +1 (856) 691 2203  
Fax: +1 (856) 691 5509  
Email: [salesamericas@lattimer.com](mailto:salesamericas@lattimer.com)

