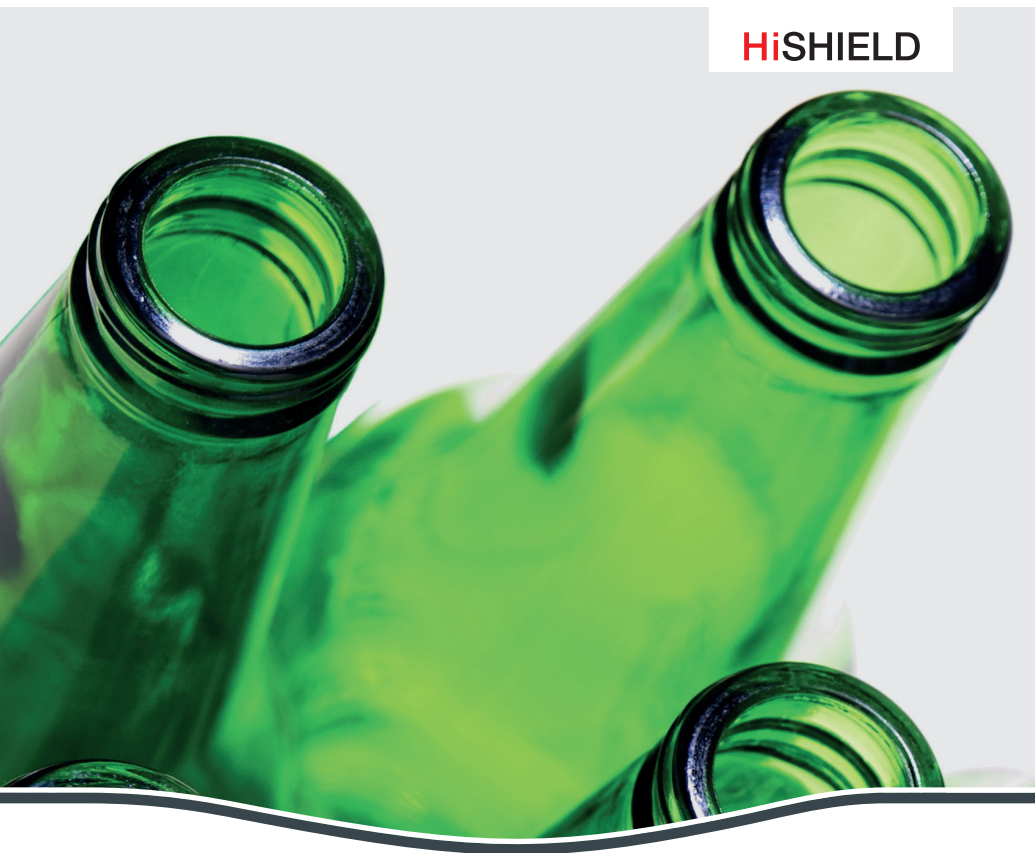


WE ARE GLASS PEOPLE

HEYE

# CAMERA BORE GAUGE (CBG)



# HEYE CAMERA BORE GAUGE (CBG)

With the Camera Bore Gauge Inspection on the SmartLine speed, it is possible to inspect the inner finish diameter for minimum and maximum of the bore and the filling tube diameter.

## Function

The high intensity LED illumination underneath the bottle illuminate the bore.

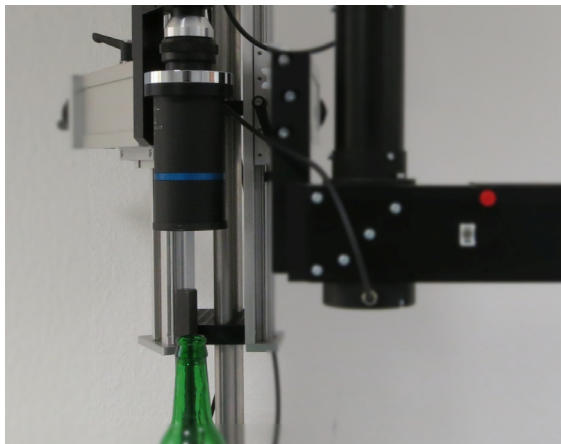
Above the finish is the high resolution camera with its telecentric lenses installed to take the picture of the finish. The software algorithm calculates the center of the finish and, together with an edge detection algorithm, calculates the diameter of the bore.

The special "Fill Tube" function checks if the fill tube diameter will pass through the center of the finish.

Thanks to the special spike detection function, it is possible to detect spikes inside the inspection area.

## Inspectable Defects are:

- Maximum bore diameter
- Minimum bore diameter
- Filling tube diameter
- Spikes



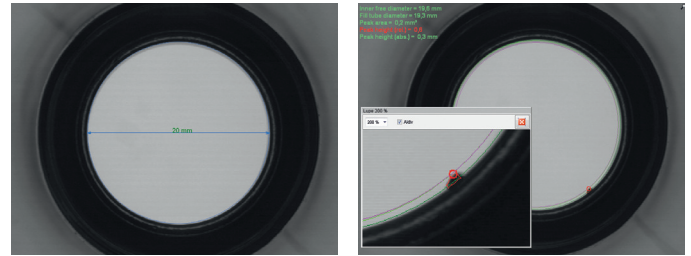
## Advantages

- Non-contact inspection
- High resolution CCD-camera
- Categorisation of defects
- Various finish types can be inspected
- Short job change time (on an existing job ~ 5 minutes)
- Userfriendly touchscreen interface
- Data connection to the SmartLine

## SmartLine Installation

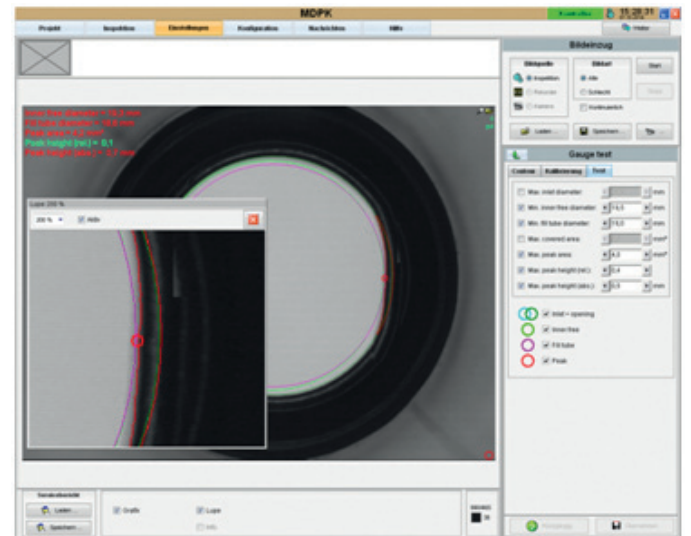
The Camera Bore Gauge inspection is installed at the second inspection station of the SmartLine speed. The SmartLine electronic is connected to the Camera Bore Gauge inspection unit.

It is possible to store and load parameter sets for different article types. Thus, the data are available for repeated use.



Diameter Inspection

Spike Detection



## Technical Data

- |                              |                      |
|------------------------------|----------------------|
| ■ Inspection speed           | max. 350 bpm         |
| ■ Bottle height              | up to 400 mm         |
| ■ Bore diameter              | 15 - 38 mm           |
| ■ Focus range                | 15 mm                |
| ■ Accuracy within focus area | +/- 0.1 mm           |
| ■ Inspection depth           | 5 - 70 mm            |
| ■ Glass colours              | amber, green, flint* |

\*=other glass colours on request

**Heye International GmbH**  
Lohplatz 1, 31683 Obernkirchen  
Germany

T +49 5724 26 26-0  
F +49 5724 26 229

[www.hey-international.com](http://www.hey-international.com)