

WE ARE GLASS PEOPLE

HEYE LOADMASTER



THE LOADMASTER DELIVERY SYSTEM

In IS-Machines, the glass gobbs are transported to the individual blank moulds by a delivery system. As they pass through the system, the gobs are influenced both in their absolute speed and in their shape. In diversified systems such as the 12-Section-Delivery there are undesirable secondary effects. These have been minimised by Heye International with the result of a very high constancy in gob loading.

Features

- The elements of the delivery system are mechanically connected with each other in such a way that when the deflector is adjusted, their relative alignment remains unchanged.
- The exit axis from the deflector always remains vertical during adjustment (parallel adjustment).
- The centrifugal forces acting on the gobs decrease steadily to the necessary minimum at the end of the deflector.
- The insertion of the guide plate between scoop and trough allows small distances in gob support and, in addition, creates space to exactly align the troughs.
- A center reject trough serves the gob at run-back function.
- The scoops, guide plates, troughs and deflectors are made of cast iron, optionally the scoops can also be made of stainless steel.
- The sliding surfaces are optimised for minimum jerk and machined according to mathematical curves.
- Setups in Single Gob (SG), Double Gob (DG), Triple Gob (TG) are available.

Advantages

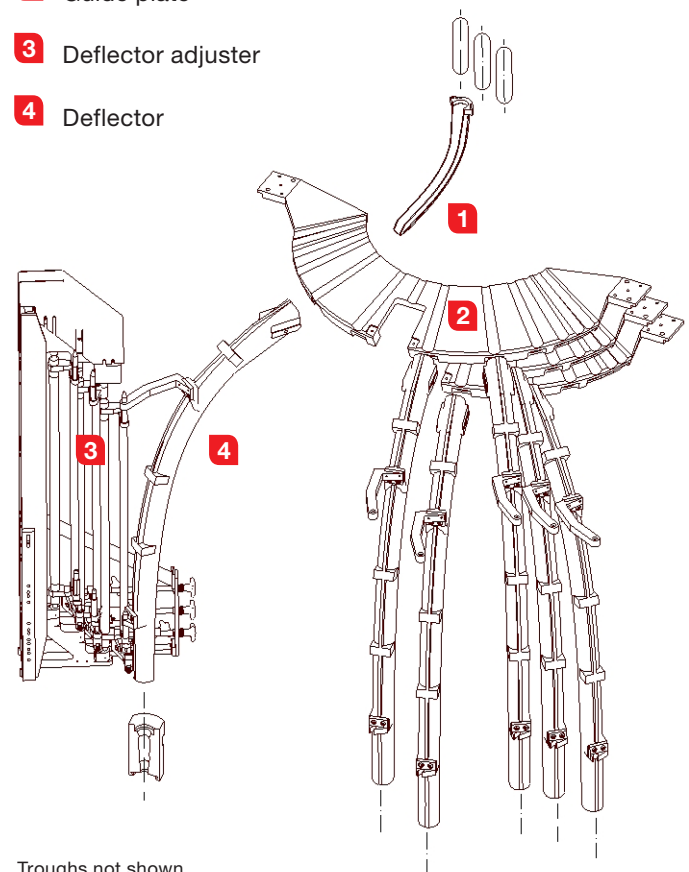
- The machined surfaces ensure a smooth run of gob.
- Long coating intervals are achieved.
- The gob always leaves the deflector vertically and can easily be adjusted to the blank mould.
- The need of readjustment is reduced to a minimum.
- All delivery system components are part of the Heye Modular Concept and can be used multiple for all machine types, thus an economic stock-keeping results.
- Fast change from DG to TG or vice-versa.

Available profile sizes

- | | |
|----------------|---------------------------------|
| ■ Scoops | 0, 0-1 1/2, 2, 2-3, 3 |
| ■ Guide plates | One size for all gob diameters. |
| ■ Troughs | 0, 0-1 1/2, 2, 2-3, 3 |
| ■ Deflectors | 5/8" - 2", in steps of 1/8" |

All upper, middle and lower scoops, guide plates, troughs and deflectors (per section) are identical.

- 1 Scoop
- 2 Guide plate
- 3 Deflector adjuster
- 4 Deflector



Troughs not shown

IMPROVED FUNCTIONS

With the experience of the recent years and the needs of our customers Heye International added some additional functions to the well-established **Loadmaster** Delivery System.

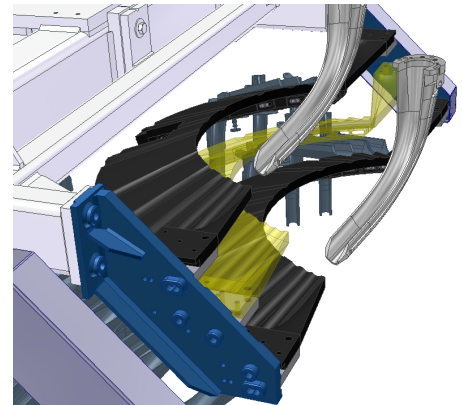
NEW

Change from DG - TG or vice-versa

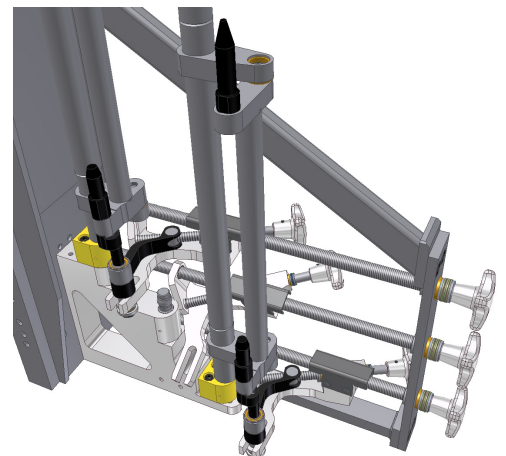
Loadmaster deflectors and troughs could always be used in all types of HI IS-Machines. This is now also implemented for components of the stationary delivery system:

The guide plate support and the deflector adjusters were unified for 6 ¼" DG and 4 ¼" TG and remain in the machine during conversion!

At the same time the new assemblies were optimised in many details for a fast change from DG to TG or vice-versa.



Guide plates DG - TG

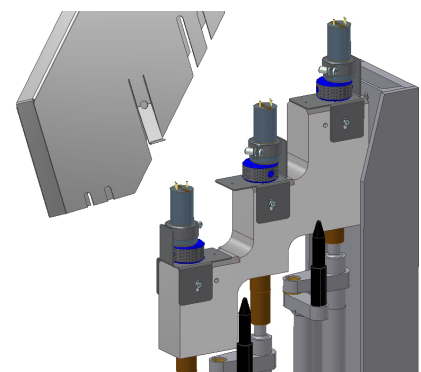


Horizontal deflector adjustment

NEW

Electrically driven height adjustment

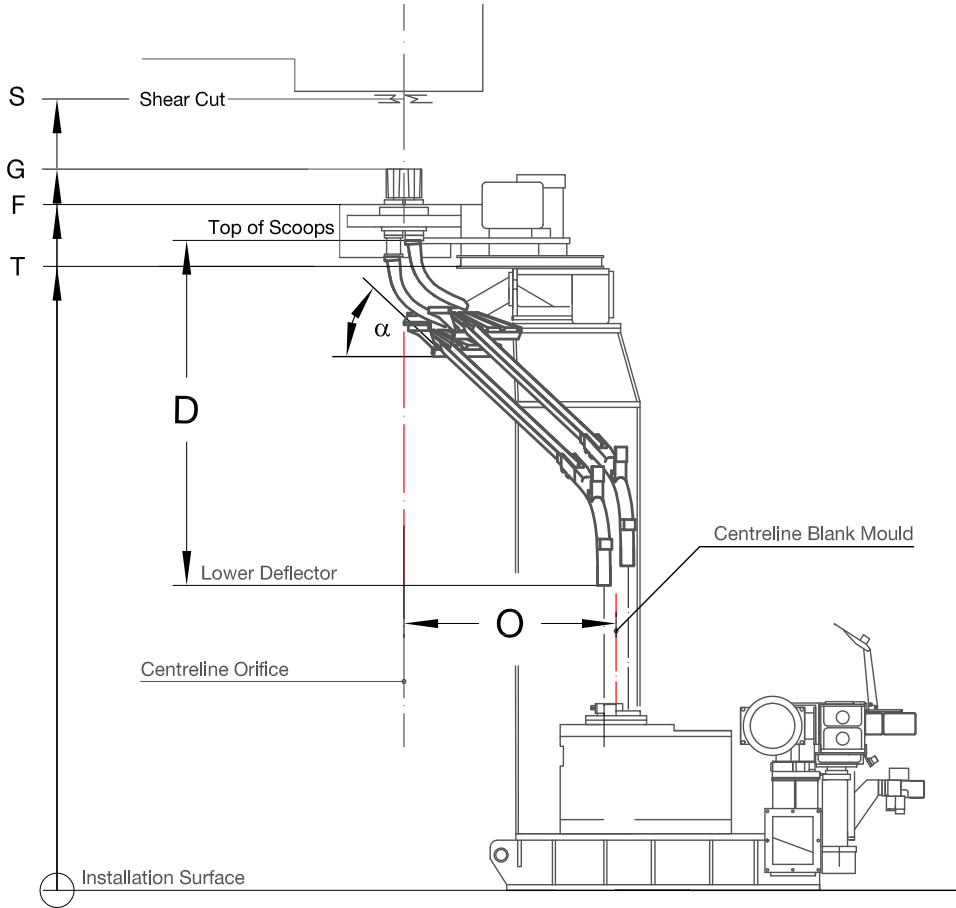
The 4 center sections of the **Loadmaster** Delivery System have got a height adjustment. The necessary drive unit now was changed to an electrically driven spindle. Compared to the manual one the electrically driven allows a comfortable and safe operation.



Electrically driven height adjustment
(4 centre sections)

LOADMASTER IN IS-MACHINES

The Heye Delivery System is based on the main measurements of standard IS-Machines.



Standard dimensions		IS 8	IS 10	IS 12
Trough angle	α		22°	
Loadmaster overall height	D		2196 mm	
Top of funnel	F		4415 mm	
Gob rejector height	G		4485 mm	
Offset	O		1168 mm	
Recommended shear cut	S		5150 mm	
Top of scoop beam	T		3971 mm	

For other dimensions or special requirements please do not hesitate to contact our team !

0814/Web

Heye International GmbH
Lohplatz 1, 31683 Obernkirchen
Germany

T +49 5724 26 452
F +49 5724 26 229

www.hey-international.com

hey international