



## Precautions on Use

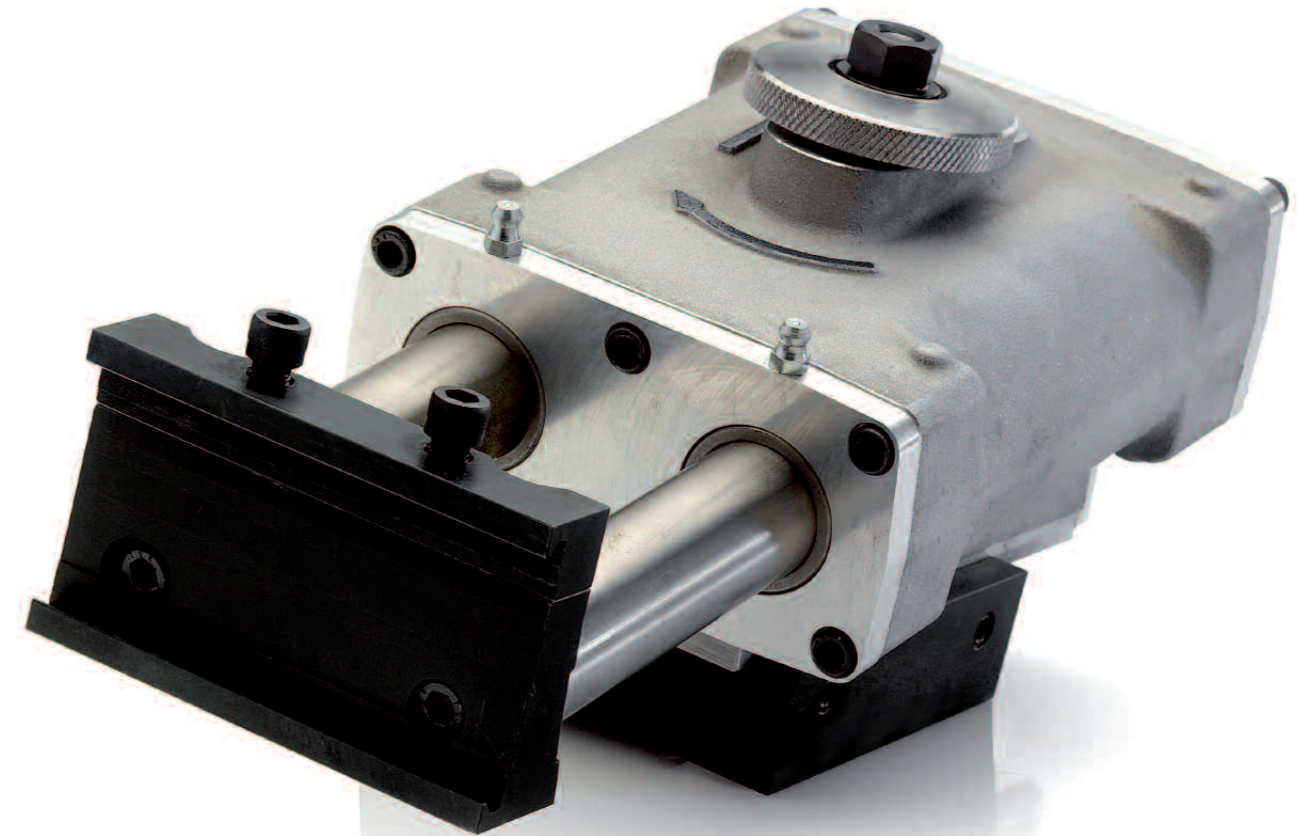
### HANDLING

Do not drop the product or subject it to high impact as doing so may lead to damage, therefore care should be exercised in its handling.

### MAINTENANCE

All Lattimer Pusher Arms are supplied as maintenance free sealed unit's. If and when necessary Pushers must be disassembled and assembled using the correct tool kit as recommended. To ensure satisfactory extended service life Lattimer replacement parts are selected and specified for their high quality and reliability, it is therefore recommended that only genuine Lattimer parts be fitted.

**Footnote:** The appearance and specifications of the product are subject to change without notice, if in doubt contact Lattimer. Although great care has been taken in the production of this brochure Lattimer will not be held responsible for damage resulting from errors or omissions.



Lattimer  
79-83 Shakespeare Street  
Southport, Merseyside  
England PR8 5AP

Tel: +44 (0) 1704 535040  
Fax: +44 (0) 1704 541046  
Email: sales@lattimer.com  
Web: www.lattimer.com

Lattimer  
3603 North Mill Road  
Vineland  
New Jersey 08360, USA

Tel: +1 (856) 691 2203  
Fax: +1 (856) 691 5509  
Email: salesamericas@lattimer.com  
Web: www.lattimer.com





INDUSTRY STANDARD

## PUSHERS

- Exceptional service life with proven reliability
- Low maintenance designs.
- Suitable for all IS machines from single to quad Gob.
- Complementary Sole and Front Plate available to suit most machine requirements.
- Upgrade kit available
- Through air option available



### Section 1: PM3000 lightweight pusher

- A 40% reduction in weight giving extended servomotor life, energy saving and ease of handling.
- Inclined body to give both improved clearance and improved ware handling.
- Replaceable wear parts giving low maintenance and extended life with the benefit of a reduction in cost.
- Smooth performance achieved by the combination of self-alignment characteristic and full 360° air sealing.
- Simple concentric adjustment mechanism to perform faster setup.
- Fully compatible with existing Lattimer fixed stroke sole plate.



### Section 2: FX2000 fixed stroke pusher with adjustable body

- Proven reliable design, the industry standard.
- High rigidity cast iron body construction.
- Compatible with all existing Lattimer fixed stroke pusher sole plate.
- Improved clearance from the inclined body creating improved ware handling.
- Ease of adjustment through pinion mechanism.
- Fast retract speed due to quick exhaust valve.



### Section 3: PM2000 adjustable stroke pusher

- PM2000 comes in 4" and 5" models for large stroke adjustment.
- Both models are suitable for I.S machines from single to quad gob.
- Twin cylinder eliminates the need for guide rods and bushes and provide smooth action over a longer working life.
- Bespoke sole plates available upon request
- Lift finger attachment available to provide increased finger clearance for large containers on return to the dead plate.

### Section 4: Sole Plates



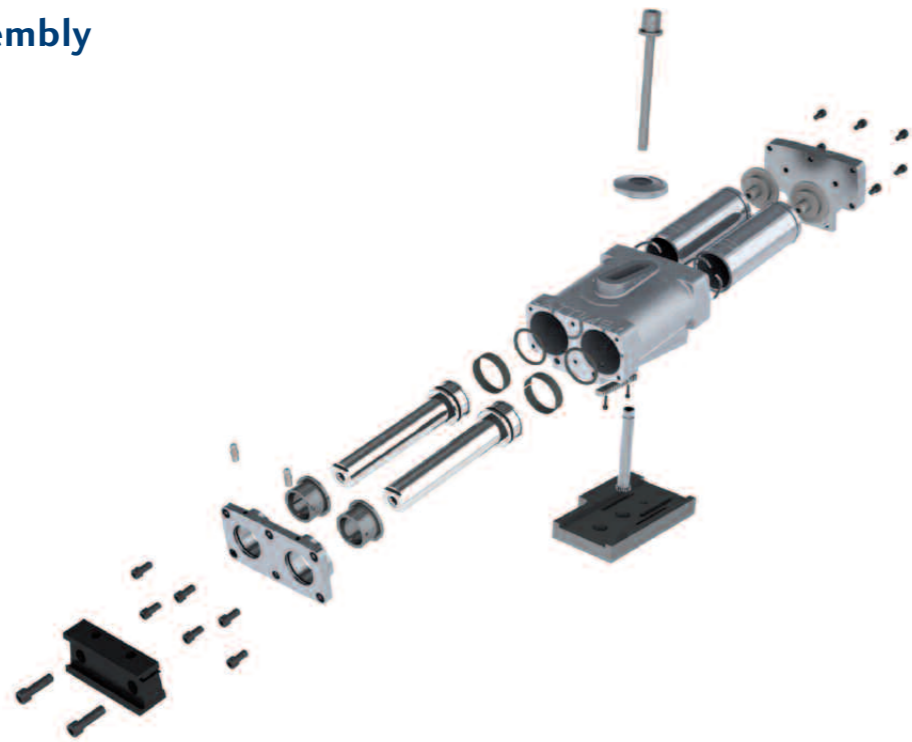
### Section 5: Front Plates



### Section 6: Risers

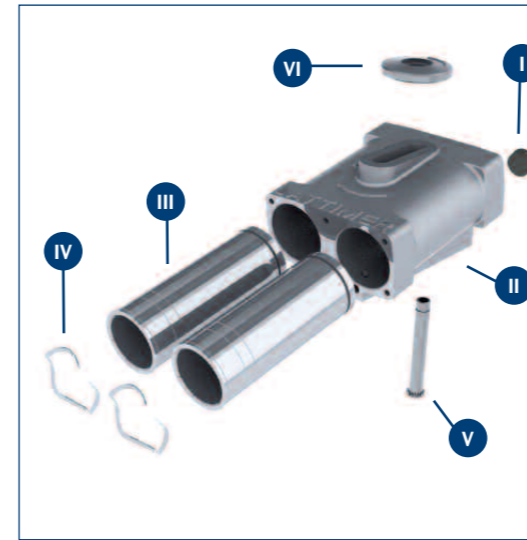


**Main Assembly**  
L14384800



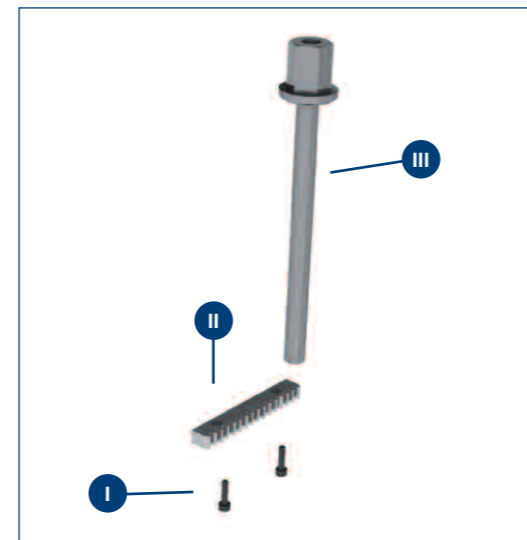
Front plates and sole plates sold separately

**Body Assembly**  
L24384800



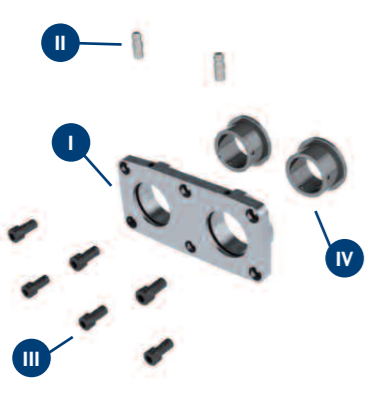
| KEY | DESCRIPTION     | Part Number     | Qty |
|-----|-----------------|-----------------|-----|
| I   | Viton Q/E Seal  | L94334800       | 1   |
| II  | Pusher Body     | L34384800       | 1   |
| III | Cylinder Sleeve | ELX-10-3        | 2   |
| IV  | Wave Spring     | V3400-2000-0024 | 4   |
| V   | Pinion          | L34385400       | 1   |
| VI  | Hand Wheel      | L34385300       | 1   |

**Rack & Clamping Bolt**



| KEY | DESCRIPTION | Part Number     | Qty |
|-----|-------------|-----------------|-----|
| I   | Cap Screw   | V1211-0164-0500 | 2   |
| II  | Rack        | L34385500       | 1   |
| III | Stud        | L34385600       | 1   |

**Front Cap Assembly**  
L14384901



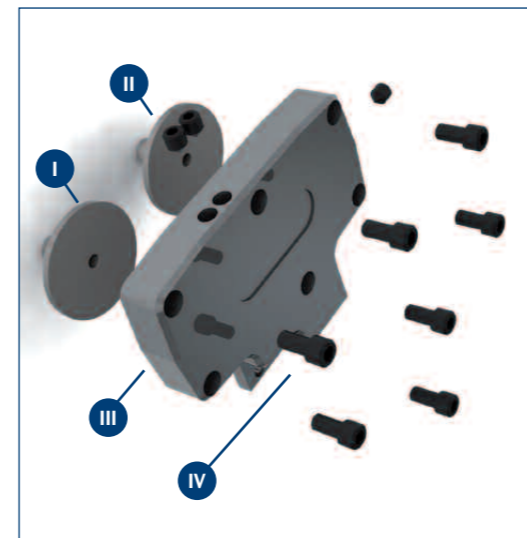
| KEY | DESCRIPTION   | Part Number     | Qty |
|-----|---------------|-----------------|-----|
| I   | Front Cap     | L34384901       | 1   |
| II  | Grease Nipple | V9018-0006-0000 | 2   |
| III | Cap Screw     | V1211-0250-0500 | 6   |
| IV  | Bush          | L34385001       | 2   |

**Piston Assembly**  
L14382100



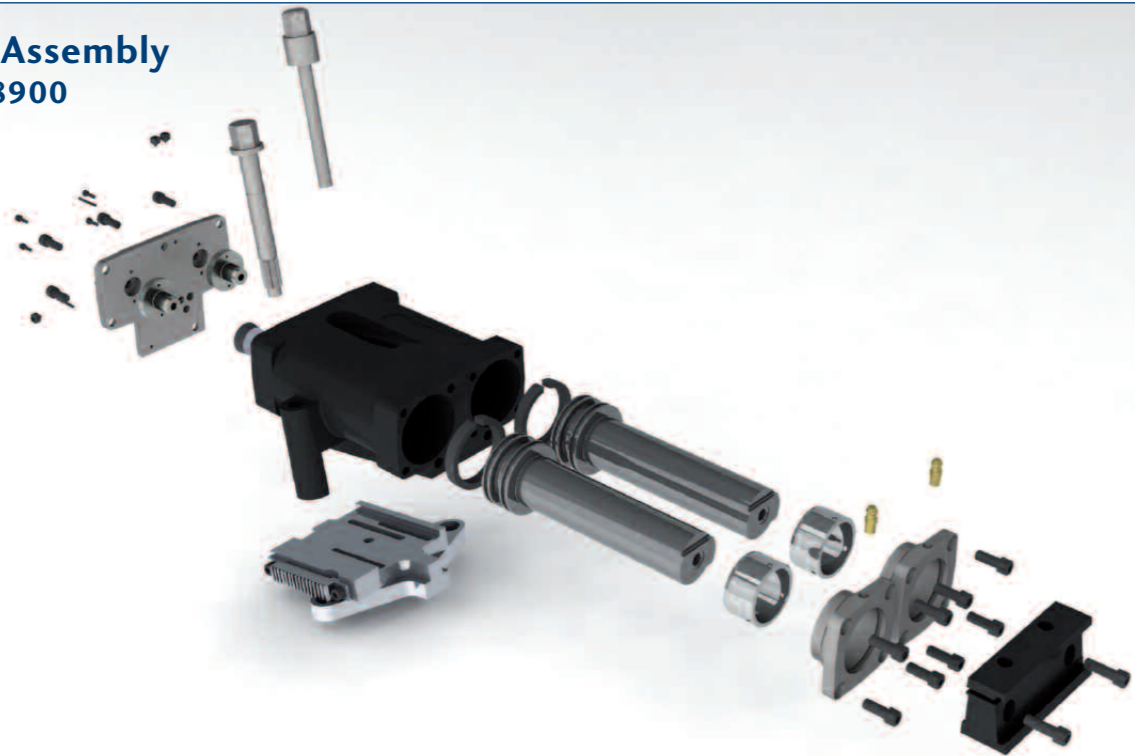
| KEY | DESCRIPTION            | Part Number      | Qty |
|-----|------------------------|------------------|-----|
| I   | Piston                 | L34382100        | 2   |
| II  | Bronze load wear strip | V6900-0010-00015 | 2   |
| III | Piston Quad Ring       | V7400-1359-0139  | 2   |

**Back Plate Assembly**  
L14385200

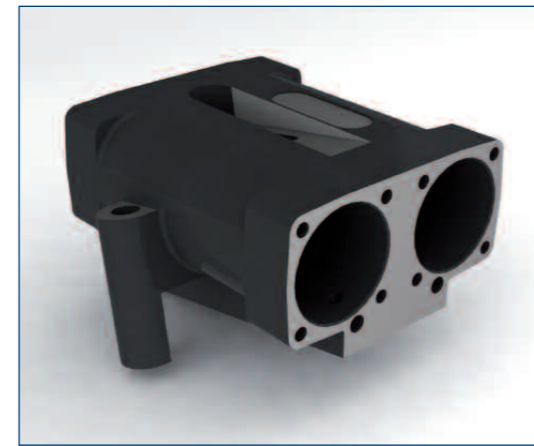


| KEY | DESCRIPTION | Part Number     | Qty |
|-----|-------------|-----------------|-----|
| I   | Spigot      | L34384900       | 2   |
| II  | Grub Screw  | V2110-0312-0312 | 3   |
| III | Back Plate  | L34385200       | 1   |
| IV  | Cap Screw   | V1211-0250-0500 | 7   |

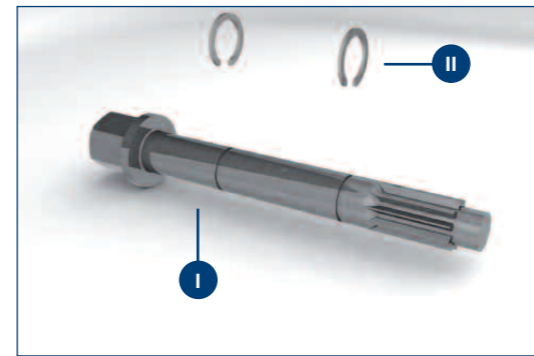
**Main Assembly**  
L14328900



Front plates and sole plates sold separately

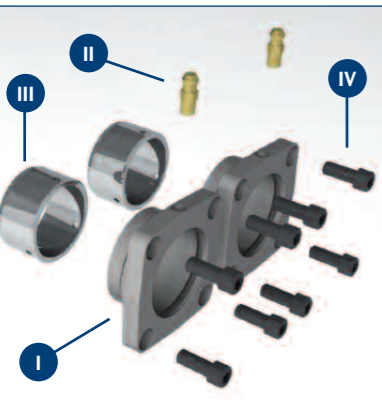


**Body Assembly**  
L24328900



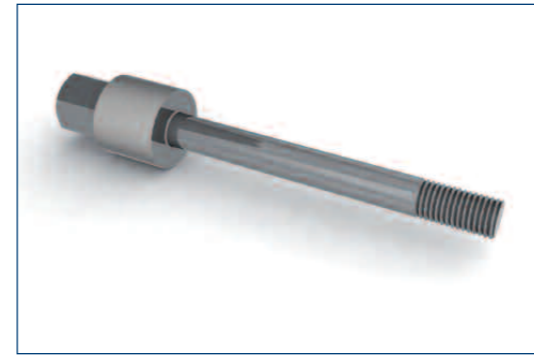
**Pinion Assembly**  
L14330402

| KEY | DESCRIPTION | Part Number     | Qty |
|-----|-------------|-----------------|-----|
| I   | Pinion      | L34330402       | 1   |
| II  | Circlip     | V5100-1400-0500 | 2   |



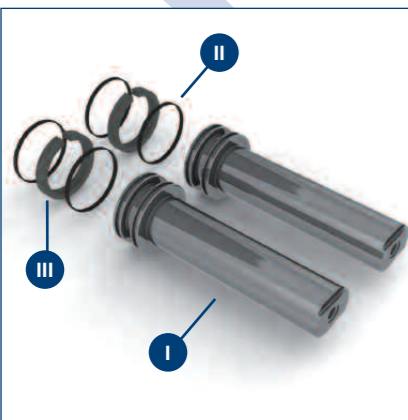
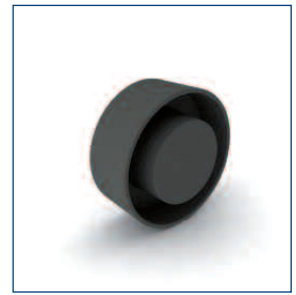
**Front Cap Assembly**  
L14329100

| KEY | DESCRIPTION               | Part Number     | Qty |
|-----|---------------------------|-----------------|-----|
| I   | Front Cap                 | L64329100       | 2   |
| II  | Grease Nipple             | V9018-0006-0000 | 2   |
| III | Front Cap Bush            | L34329200       | 2   |
| IV  | Cap Screw 1/4" UNC x 5/8" | V1211-0250-0625 | 8   |



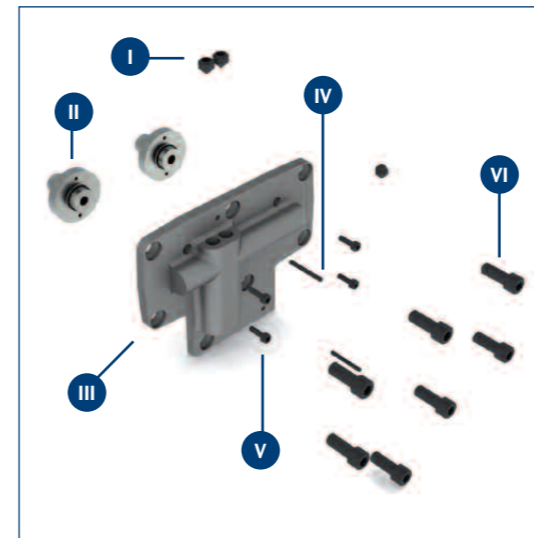
**Clamping Bolt**  
L34329600

**Quick Exhaust Seal**  
L94334800



**Piston Assembly**  
L14329300

| KEY | DESCRIPTION  | Part Number | Qty |
|-----|--------------|-------------|-----|
| I   | Piston       | L34329300   | 2   |
| II  | Piston Ring  | L94200700   | 4   |
| III | Support Ring | L94200800   | 2   |

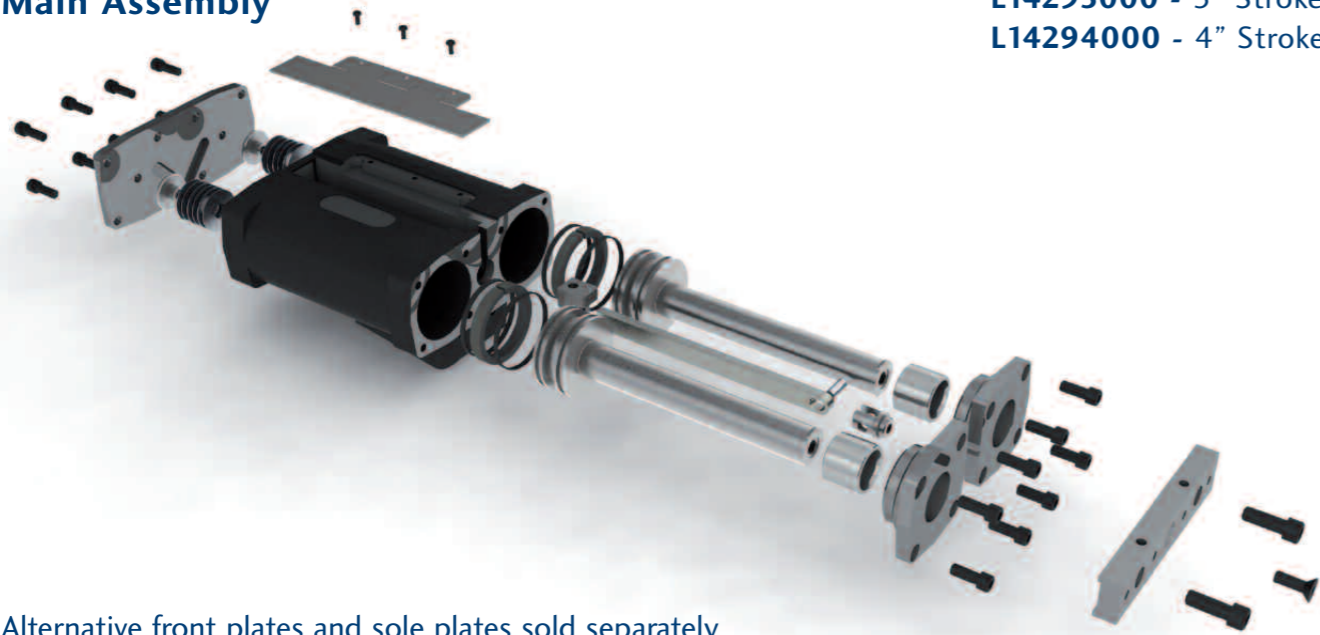


**Back Plate Assembly**  
L14329900

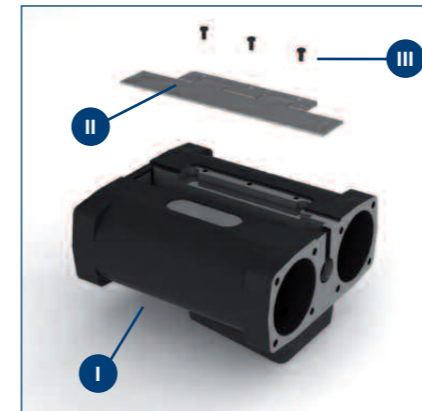
| KEY | DESCRIPTION                  | Part Number     | Qty |
|-----|------------------------------|-----------------|-----|
| I   | Grub Screw 5/16 UNG x 5 1/16 | V2110-0312-0312 | 3   |
| II  | Spigot                       | L34330000       | 2   |
| III | Back Plate                   | L34329900       | 1   |
| IV  | Roll Pin 1/8 Dia x 1/2 Long  | V4600-0125-0500 | 2   |
| V   | Cap Head Screw M3 x 10mm     | V1218-003-0010  | 4   |
|     | Shake-Proof Washer x 3mm     | V3300-0003-0000 | 4   |
| VI  | Capscrew 1/4 UNC x 5/8       | V1211-0250-0625 | 7   |

**Main Assembly**

L14295000 - 5" Stroke  
L14294000 - 4" Stroke

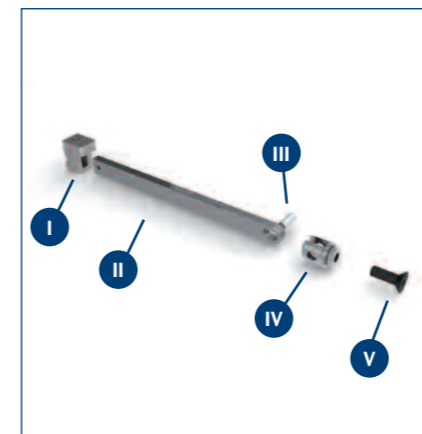


Alternative front plates and sole plates sold separately



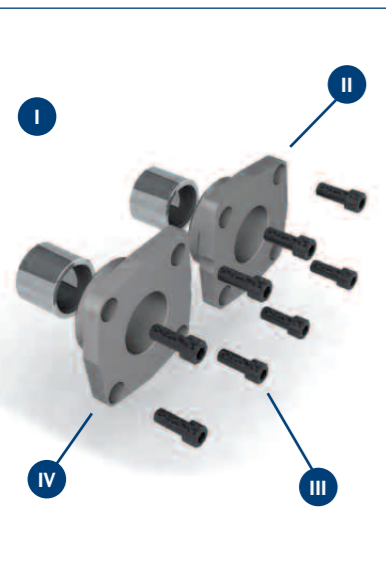
**Body Assembly**  
(5") L14200100 / (4") L14210100

| KEY | DESCRIPTION  | 5" Part Number  | Qty | 4" Part Number  | Qty |
|-----|--------------|-----------------|-----|-----------------|-----|
| I   | Pusher Body  | L34200100       | 1   | L34210100       | 1   |
| II  | Hinged Cover | L34202600       | 1   | L34212600       | 1   |
| III | Screw        | V2917-0004-0187 | 3   | V2917-0004-0187 | 3   |



**Stop Bar Assembly**  
(5") L14201100 / (4") L14211100

| KEY | DESCRIPTION | 5" Part Number  | Qty | 4" Part Number  | Qty |
|-----|-------------|-----------------|-----|-----------------|-----|
| I   | Stop Body   | L14201200       | 1   | L14201200       | 1   |
| II  | Stop Bar    | L34201500       | 1   | L34211500       | 1   |
| III | Clevis Pin  | L34201600       | 1   | L34201600       | 1   |
| IV  | Clevis Fork | L34201700       | 1   | L34201700       | 1   |
| V   | Screw       | V1211-0250-0500 | 1   | V1211-0250-0500 | 1   |

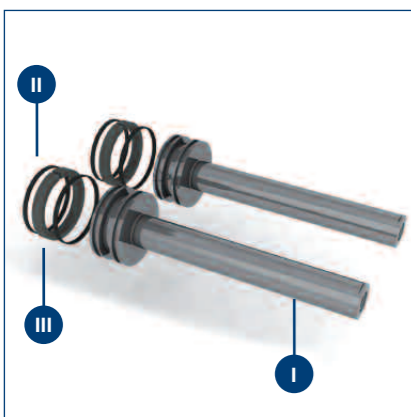


**Front Cap Assembly**  
(RH) L14200300

| KEY | DESCRIPTION    | 5" Part Number  | Qty | 4" Part Number  | Qty |
|-----|----------------|-----------------|-----|-----------------|-----|
| I   | Bronze Bush    | L34201001       | 1   | L34201001       | 1   |
| II  | Front Cap (RH) | L34200300       | 1   | L34200300       | 1   |
| III | Cap Screw      | V1211-0250-0625 | 4   | V1211-0250-0625 | 4   |

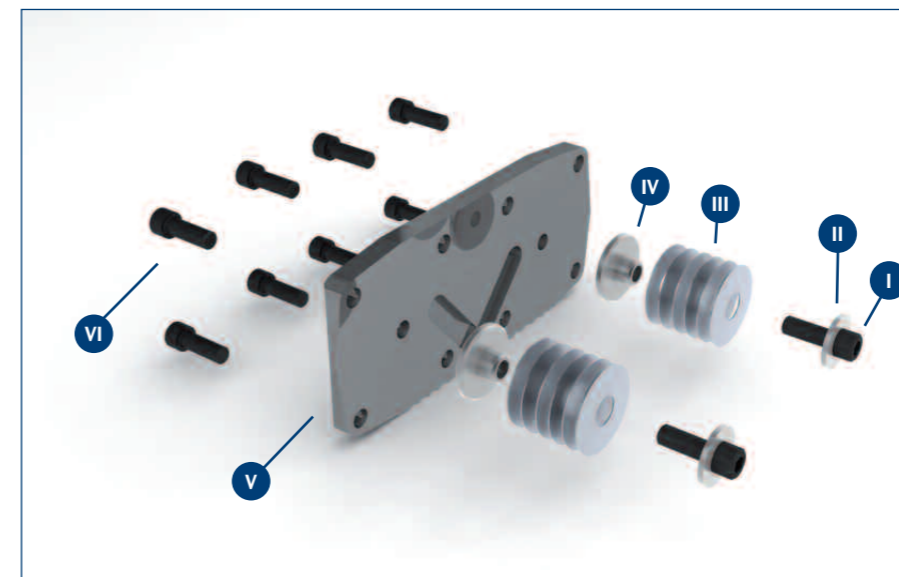
(LH) L14200400

| KEY | DESCRIPTION    | 5" Part Number  | Qty | 4" Part Number | Qty |
|-----|----------------|-----------------|-----|----------------|-----|
| I   | Bronze Bush    | L34201001       | 1   | L34201001      | 1   |
| IV  | Front Cap (LH) | L34200300       | 1   | L34200300      | 1   |
| III | Cap Screw      | V1211-0250-0625 | 4   | L34200400      | 4   |



**Piston Assembly**  
L14200600

| KEY | DESCRIPTION  | 5" Part Number | Qty | 4" Part Number | Qty |
|-----|--------------|----------------|-----|----------------|-----|
| I   | Piston       | L34200600      | 2   | L34210600      | 2   |
| II  | Piston Ring  | L94200701      | 4   | L94200701      | 4   |
| III | Support Ring | L94200800      | 2   | L94200800      | 2   |



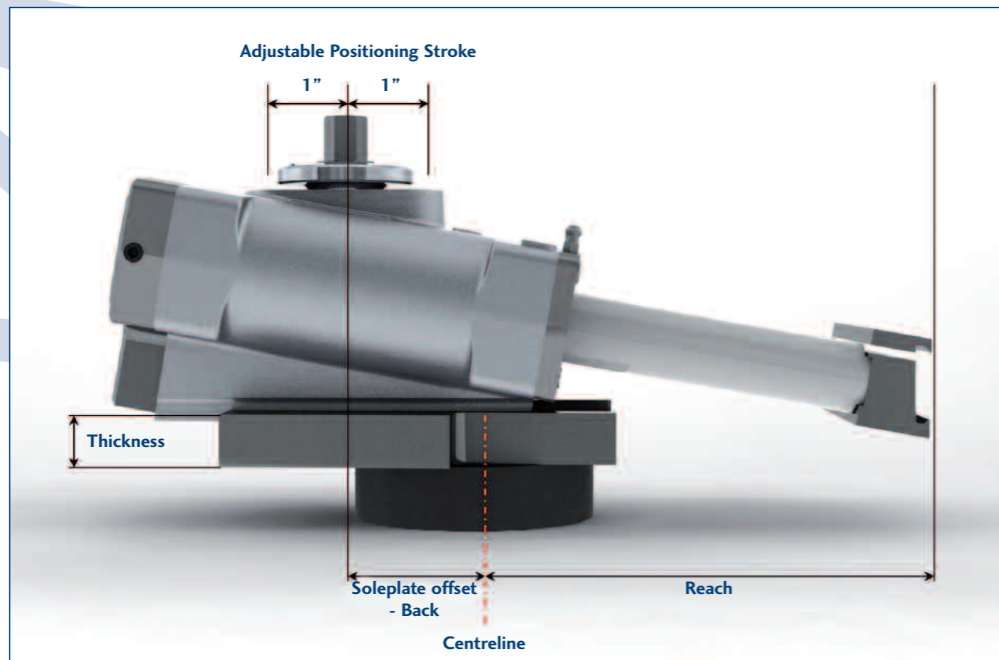
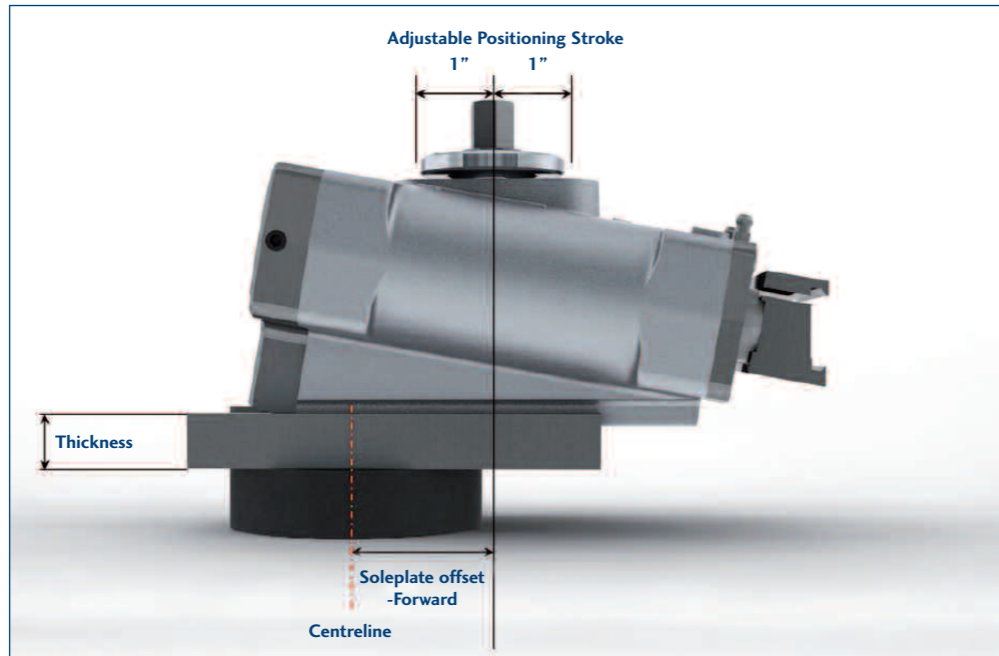
**Back Plate Assembly**  
L14200200



Buffer kit available  
L14200900

| KEY | DESCRIPTION            | 5" Part Number  | Qty | 4" Part Number  | Qty |
|-----|------------------------|-----------------|-----|-----------------|-----|
| I   | CapScrew 1/4 UNC x 3/4 | V1211-0250-0750 | 2   | V1211-0250-0750 | 2   |
| II  | Washer                 | V3100-0006-0002 | 2   | V3100-0006-0002 | 2   |
| III | Disc Springs           | L94200900       | 12  | L94200900       | 12  |
| IV  | Spacer                 | L34202400       | 2   | L34202400       | 2   |
| V   | Back Plate             | L34200200       | 1   | L34200200       | 1   |
| VI  | Capscrew 1/4 UNC x 5/8 | V1211-0250-0625 | 8   | V1211-0250-0625 | 8   |

Turntable Type

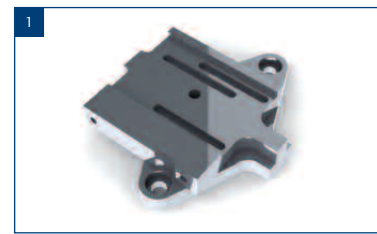


Fixed Stroke Pusher Sole Plate Index

| Turntable Type | Offset         | Thickness | Maximum Reach | Minimum Reach | Part Number | Page |
|----------------|----------------|-----------|---------------|---------------|-------------|------|
| E              | 1/2" FORWARD   | 1"        | 10.375"       | 8.375"        | L14332400   | 12   |
| E              | 15/16" BACK    | 1"        | 8.937"        | 6.937"        | L14332401   |      |
| E              | 1" FORWARD     | 1"        | 10.875"       | 8.875"        | L14332402   |      |
| E              | 1 15/16" BACK  | 1"        | 7.937"        | 5.937"        | L14332403   |      |
| E              | NO OFFSET      | 1"        | 9.875"        | 7.875"        | L14332404   |      |
| F              | NO OFFSET      | 1 11/16"  | 9.875"        | 7.875"        | L14337000   |      |
| F              | NO OFFSET      | 1.166"    | 9.875"        | 7.875"        | L14337001   |      |
| F              | NO OFFSET      | 1 11/16"  | 9.875"        | 7.875"        | L14337002   |      |
| F              | NO OFFSET      | 1 11/16"  | 9.875"        | 7.875"        | L14337003   |      |
| OIS V.S        | 15/16" BACK    | 1 1/18"   | 8.937"        | 6.937"        | L14337801   |      |
| A              | 60mm BACK      | 5/8"      | 7.513"        | 5.513"        | L14335700   |      |
| B              | 60mm BACK      | 5/8"      | 7.513"        | 5.513"        | L14335701   |      |
| A              | 15mm BACK      | 5/8"      | 9.284"        | 7.284"        | L14337500   |      |
| C              | 13/16" FORWARD | 1"        | 10.687"       | 8.867"        | L14200533   |      |
| A              | NO OFFSET      | 5/8"      | 9.875"        | 7.875"        | L14329800   | 13   |
| B              | NO OFFSET      | 5/8"      | 9.875"        | 7.875"        | L14329801   |      |
| B              | 25MM BACK      | 1 1/16"   | 8.891"        | 6.891"        | L14337701   |      |
| B              | 25MM BACK      | 1 1/16"   | 8.891"        | 6.891"        | L14337702   |      |
| B              | 1.862" BACK    | 5/8"      | 8.013"        | 6.013"        | L14341301   |      |
| C              | NO OFFSET      | 1"        | 9.875"        | 7.875"        | L14329802   |      |
| C              | NO OFFSET      | 3/4"      | 9.875"        | 7.875"        | L14329803   |      |
| C              | 1/4" BACK      | 1"        | 9.625"        | 7.625"        | L14336301   |      |
| C              | 25mm BACK      | 3/4"      | 8.891"        | 6.891"        | L14336302   |      |
| D              | 25mm BACK      | 13/16"    | 8.891"        | 6.891"        | L14344200   |      |
| D              | 25mm BACK      | 13/16"    | 8.891"        | 6.891"        | L14344201   |      |
| D              | 25mm BACK      | 13/16"    | 8.891"        | 6.891"        | L14344203   |      |
| D              | 10mm FORWARD   | 13/16"    | 10.269"       | 8.269"        | L14347901   |      |

Customer special sole plates, riser and front plates are available on request. Contact your Lattimer sales representative.

All Soleplates, where applicable, come with suitable rack included



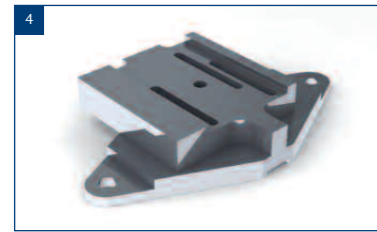
| Assembly Number | Description                 | Part Number      | Qty |
|-----------------|-----------------------------|------------------|-----|
| 1               | Sole Plate (MAUL ELEC)      | L34332400        | 1   |
|                 | Grub Screw 5/16 UNF x 5/16  | V2110-0312-0312  | 4   |
|                 | H/ COIL 3/8 UNC x 1 D S/LOK | V0811-0375-1000S | 1   |
| L14332401       | Sole Plate (MAUL ELEC)      | L34332401        | 1   |
|                 | Grub Screw 5/16 UNF x 5/16  | V2110-0312-0312  | 6   |
|                 | H/COIL 3/8 UNC x 1 D S/LOK  | V0811-0375-1000S | 1   |
| L14332402       | Sole Plate (MAUL ELEC)      | L34332402        | 1   |
|                 | Grub Screw 5/16 UNF x 5/16  | V2110-0312-0312  | 6   |
|                 | H/COIL 3/8 UNC x 1 D S/LOK  | V0811-0375-1000S | 1   |
| L14332403       | Sole Plate (MAUL ELEC)      | L34332403        | 1   |
|                 | Grub Screw 5/16 UNF x 5/16  | V2110-0312-0312  | 7   |
|                 | H/COIL 3/8 UNC x 1 D S/LOK  | V0811-0375-1000S | 1   |
| L14332404       | Sole Plate (MAUL ELEC)      | L34332404        | 1   |
|                 | Grub Screw 5/16 UNF x 5/16  | V2110-0312-0312  | 4   |
|                 | H/COIL 3/8 UNC x 1 D S/LOK  | V0811-0375-1000S | 1   |



|           |                         |                         |                 |   |
|-----------|-------------------------|-------------------------|-----------------|---|
| 2         | L14337000               | Sole Plate (Emhart 560) | L34337000       | 1 |
|           |                         | Plug                    | V6700-0312-0000 | 6 |
| L14337001 | Sole Plate (Emhart 560) | L34337001               | 1               |   |
|           |                         | Plug                    | V6700-0312-0000 | 6 |
| L14337002 | Sole Plate (Emhart 560) | L34337002               | 1               |   |
|           |                         | Plug                    | V6700-0312-0000 | 6 |



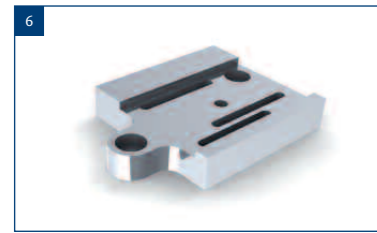
|   |           |                         |                 |   |
|---|-----------|-------------------------|-----------------|---|
| 3 | L14337003 | Sole Plate (Emhart 560) | L34337003       | 1 |
|   |           | Plug                    | V6700-0312-0000 | 6 |



|   |           |                             |                  |   |
|---|-----------|-----------------------------|------------------|---|
| 4 | L14337801 | Sole Plate (ISP DESIGN)     | L34337801        | 1 |
|   |           | Grub Screw 5/16 UNF x 5/16  | V2110-0312-0312  | 6 |
|   |           | H/ COIL 3/8 UNC x 1 D S/LOK | V0811-0375-1500S | 1 |



|           |                      |                             |                  |   |
|-----------|----------------------|-----------------------------|------------------|---|
| 5         | L14335700            | Sole Plate (Bottero)        | L34335700        | 1 |
|           |                      | Grub Screw 5/16 UNF x 5/16  | V2110-0312-0312  | 3 |
|           |                      | H/ COIL 3/8 UNC x 1 D S/LOK | V0811-0375-1000S | 1 |
| L14335701 | Sole Plate (Bottero) | L34335701                   | 1                |   |
|           |                      | Grub Screw 5/16 UNF x 5/16  | V2110-0312-0312  | 3 |
|           |                      | H/ COIL 3/8 UNC x 1 D S/LOK | V0811-0375-1000S | 1 |



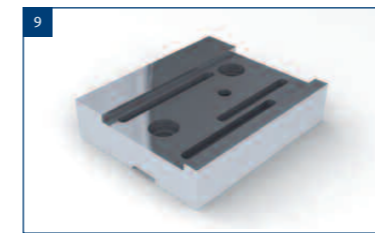
|   |  |                            |                 |   |
|---|--|----------------------------|-----------------|---|
| 6 | L14337500                                  | Sole Plate                 | L34337500       | 1 |
|   | (CAN BE USED WITH RISER L34337600 - pg 15) | Grub Screw 5/16 UNF x 5/16 | V2110-0312-0312 | 2 |
|   |  | H/ COIL 3/8 UNC            | V0811-0375-0375 | 1 |



|   |           |                            |                 |   |
|---|-----------|----------------------------|-----------------|---|
| 7 | L14200533 | Sole Plate                 | L34200533       | 1 |
|   |           | Grub Screw 5/16 UNF x 5/16 | V2110-0312-0312 | 3 |



|           |  |                               |                  |   |
|-----------|--|-------------------------------|------------------|---|
| 8         | L14329800                                  | Sole Plate                    | L34329800        | 1 |
|           |  | Grub Screw 5/16 UNF x 5/16    | V2110-0312-0312  | 2 |
|           |  | H/ COIL 3/8 UNC x 1 D S/LOK   | V0811-0375-1000S | 1 |
| L14329801 | Sole Plate                                 | L34329801                     | 1                |   |
|           | (CAN BE USED WITH RISER L34344600 - pg 15) | Grub Screw 5/16 UNF x 5/16    | V2110-0312-0312  | 2 |
|           |  | H/ COIL 3/8 UN X 1 1/2D S/LOK | V0811-0375-1500S | 1 |



|           |   |                             |                  |   |
|-----------|---|-----------------------------|------------------|---|
| 9         | L14337702                                   | Sole Plate                  | L34337701        | 1 |
|           | (MUST BE USED WITH RISER L34350401 - pg 15) | Grub Screw 5/16 UNF x 5/16  | V2110-0312-0312  | 2 |
|           |   | H/ COIL 3/8 UNC x 1 D S/LOK | V0811-0375-1000S | 1 |
| L14337702 | Sole Plate                                  | L34337702                   | 1                |   |
|           | (MUST BE USED WITH RISER L34350400 - pg 15) | Grub Screw 5/16 UNF x 5/16  | V2110-0312-0312  | 2 |
|           |   | H/ COIL 3/8 UNC x 1 D S/LOK | V0811-0375-1500S | 1 |



|    |  |                             |                  |   |
|----|--|-----------------------------|------------------|---|
| 10 | L14341301                                  | Sole Plate                  | L34341301        | 1 |
|    | (CAN BE USED WITH RISER L34350400 - pg 15) | Grub Screw 5/16 UNF x 5/16  | V2110-0312-0312  | 3 |
|    |  | H/ COIL 3/8 UNC x 1 D S/LOK | V0811-0375-1000S | 1 |



|           |            |                             |                  |   |
|-----------|------------|-----------------------------|------------------|---|
| 11        | L14329802  | Sole Plate                  | L34329802        | 1 |
|           |            | Grub Screw 5/16 UNF x 5/16  | V2110-0312-0312  | 2 |
|           |            | H/ COIL 3/8 UNC x 1 D S/LOK | V0811-0375-1000S | 1 |
| L14329803 | Sole Plate | L34329803                   | 1                |   |
|           |            | Grub Screw 5/16 UNF x 5/16  | V2110-0312-0312  | 2 |
|           |            | H/ COIL 3/8 UNC x 1 D S/LOK | V0811-0375-1500S | 1 |



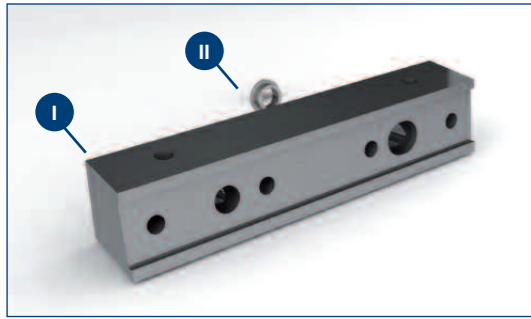
|           |  |                                |                  |   |
|-----------|--|--------------------------------|------------------|---|
| 12        | L14336301                                  | Sole Plate                     | L34336301        | 1 |
|           |  | Grub Screw 5/16 UNF x 5/16     | V2110-0312-0312  | 2 |
|           |  | H/ COIL 3/8 UNC x 1 D S/LOK    | V0811-0375-1000S | 1 |
| L14336302 | Sole Plate                                 | L34336302                      | 1                |   |
|           | (CAN BE USED WITH RISER L34356200 - pg 15) | Grub Screw 5/16 UNF x 5/16     | V2110-0312-0312  | 3 |
|           |  | H/ COIL 3/8 UNC X 1 1/2D S/LOK | V0811-0375-1500S | 1 |



|           |   |                             |                  |   |
|-----------|---|-----------------------------|------------------|---|
| 13        | L14344200                                   | Sole Plate                  | L34344200        | 1 |
|           | (MUST BE USED WITH RISER L34344300 - pg 15) | Grub Screw 5/16 UNF x 5/16  | V2110-0312-0312  | 4 |
|           |   | H/ COIL 3/8 UNC x 1 D S/LOK | V0811-0375-1000S | 1 |
| L14344201 | Sole Plate                                  | L34344201                   | 1                |   |
|           | (MUST BE USED WITH RISER L34344301 - pg 15) | Grub Screw 5/16 UNF x 5/16  | V2110-0312-0312  | 4 |
|           |   | H/ COIL 3/8 UNC             | V0811-0375-0375  | 1 |
| L14344203 | Sole Plate                                  | L34344203                   | 1                |   |
|           | (MUST BE USED WITH RISER L34344304 - pg 15) | Grub Screw 5/16 UNF x 5/16  | V2110-0312-0312  | 4 |

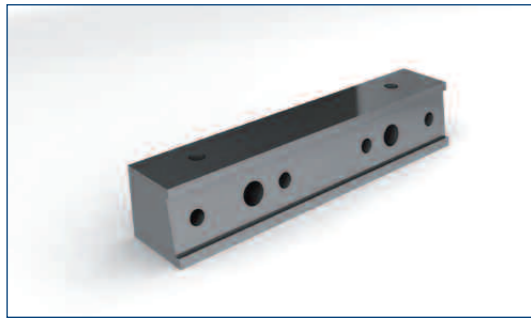


|    |  |                            |                 |   |
|----|--|----------------------------|-----------------|---|
| 14 | L14347901                                  | Sole Plate                 | L34347901       | 1 |
|    | (CAN BE USED WITH RISER L34344305 - pg 15) | Grub Screw 5/16 UNF x 5/16 | V2110-0312-0312 | 3 |
|    |  | Key Insert                 | V1611-0375-0500 | 1 |



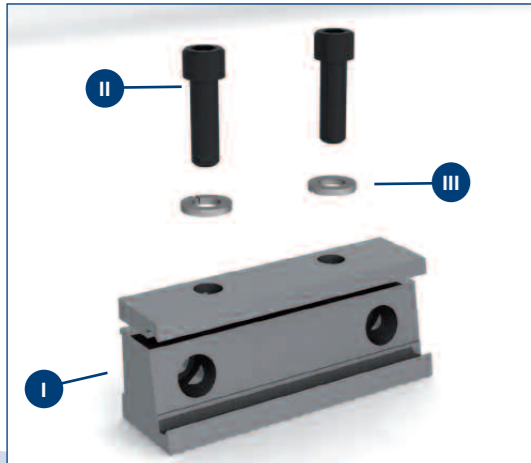
**L14330101**

| KEY | DESCRIPTION    | Part Number | Qty |
|-----|----------------|-------------|-----|
| I   | 1" front plate | L34330101   | 1   |
| II  | Spacer         | L34230000   | 1   |



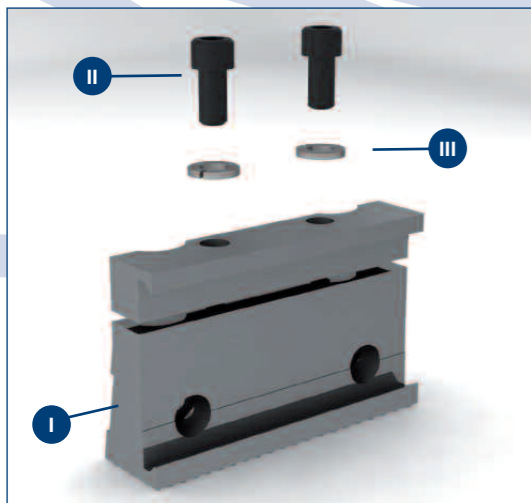
**L14330100**

| KEY | DESCRIPTION    | Part Number | Qty |
|-----|----------------|-------------|-----|
| I   | 1" front plate | L34330100   | 1   |



**L14329400**

| KEY | DESCRIPTION     | Part Number     | Qty |
|-----|-----------------|-----------------|-----|
| I   | 1" Nipper plate | L34329400       | 1   |
| II  | Cap Head Bolt   | V1211-0312-0625 | 2   |
| III | Washer          | V3300-0312-0000 | 2   |

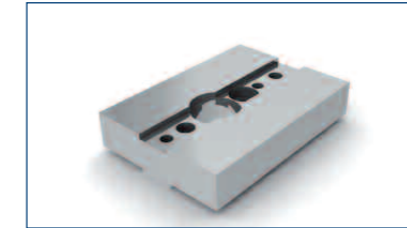


**L14341100**

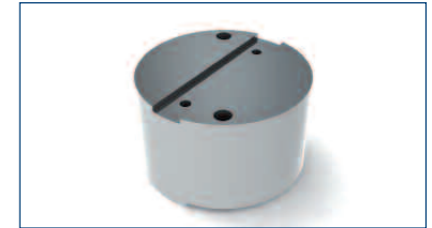
| KEY | DESCRIPTION     | Part Number     | Qty |
|-----|-----------------|-----------------|-----|
| I   | 2" Nipper plate | L34341100       | 1   |
| II  | Cap Head Bolt   | V1211-0312-0625 | 2   |
| III | Washer          | V3300-0312-0000 | 2   |



Thickness: 5/8"  
Riser number: L34356200  
For use with sole plate: L14356200



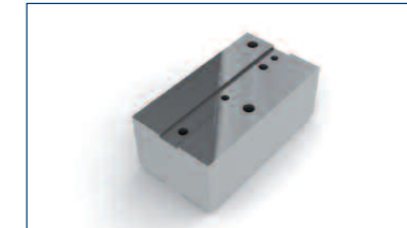
Thickness: 3/4"  
Riser number: L34336200  
For use with sole plate: L14337500



Thickness: 1"  
Riser number: L34344600  
For use with sole plate: L14337701



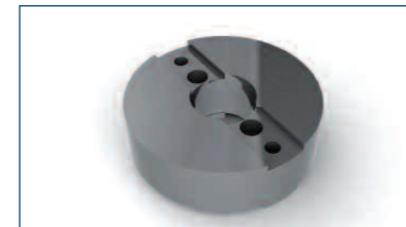
Thickness: 13/16"  
Riser number: L34338401  
For use with sole plate: L14337701/L14337702



Thickness: 2 1/4"  
Riser number: L34344306  
For use with sole plate: L14347902



Thickness: 13/16"  
Riser number: L34327600  
For use with sole plate: L143360302



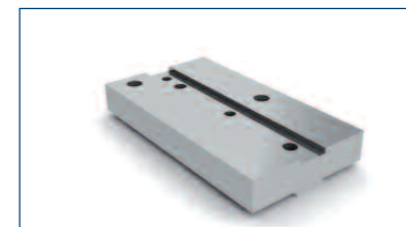
Thickness: 1"  
Riser number: L34341401  
For use with sole plate: L14341301



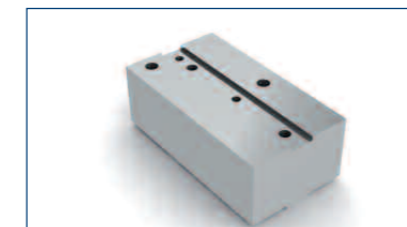
Thickness: 60mm  
Riser number: L34350400  
For use with sole plate: L14329801



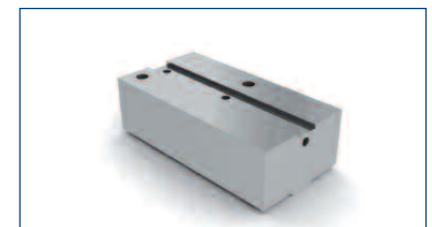
Thickness: 1"  
Riser number: L34344300  
For use with sole plate: L14344200/ L14344201



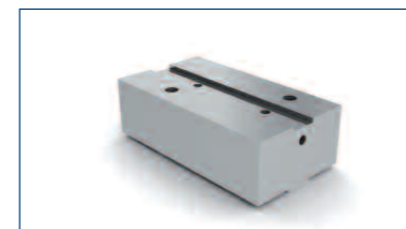
Thickness: 0.730"  
Riser number: L34344301  
For use with sole plate: L14344201



Thickness: 2"  
Riser number: L34344302  
For use with sole plate: L14347900



Thickness: 1 13/16"  
Riser number: L34344304  
For use with sole plate: L14344201/ L14344202



Thickness: 45mm  
Riser number: L34344305  
For use with sole plate: L14347901

PM 2000 sole plate, front plate and riser are also available upon request. Customer special sole plates, riser and front plates are also available upon request. Contact your Lattimer sales representative.